

Identification Key to Campbell Island Freshwater Invertebrates

McMurtrie, Sinton & Winterbourn (2014)



Boeckella sp. INFORMATION SHEET

Classification

Subphylum:	Crustacea
Class:	Maxillopoda
Subclass:	Copepoda
Order:	Calanoida
Family:	Centropagidae
Genus:	<i>Boeckella</i>
Specific name:	unknown species
Common name:	calanoid copepod

Distinguishing Features

In calanoid copepods the antennae extend well beyond the metasome and they may be longer than the body (Fig. 1). The urosome is narrower than the metasome and there is only one egg sac.

The genus *Boeckella* has the following features (Jolly, 1957):

- Cephalothorax (cephalosome) of 6 segments, the head being the largest.
- Abdomen of the male 5-segmented; abdomen of female 3-segmented.
- Caudal lamellae short, each with 5 plumose setae.
- Exopodites of female 5th legs having the second joint produced into a stout inner spine (Fig. 2).
- Last (5th) pair of legs of males prehensile, and terminating in long moveable claws (Fig. 3).

Comments

Boeckella is a widespread genus with species in New Zealand, Australia and South America. Eight species have been reported from New Zealand (Chapman *et al.*, 2011) where they are common macro-filterers of pond and lake plankton. *B. brevicaudata* (Brady) has been recorded from Macquarie Island (Pugh *et al.*, 2002). The long spine-like claws of the male 5th legs provide rapid identification of the genus.

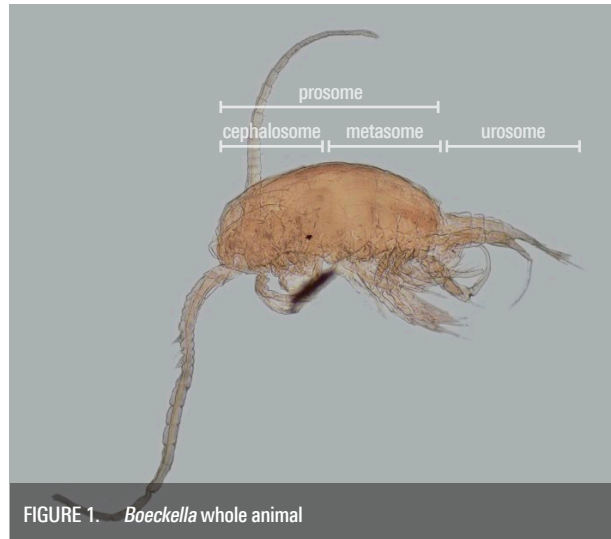


FIGURE 1. *Boeckella* whole animal



FIGURE 2. *Boeckella* female 5th leg

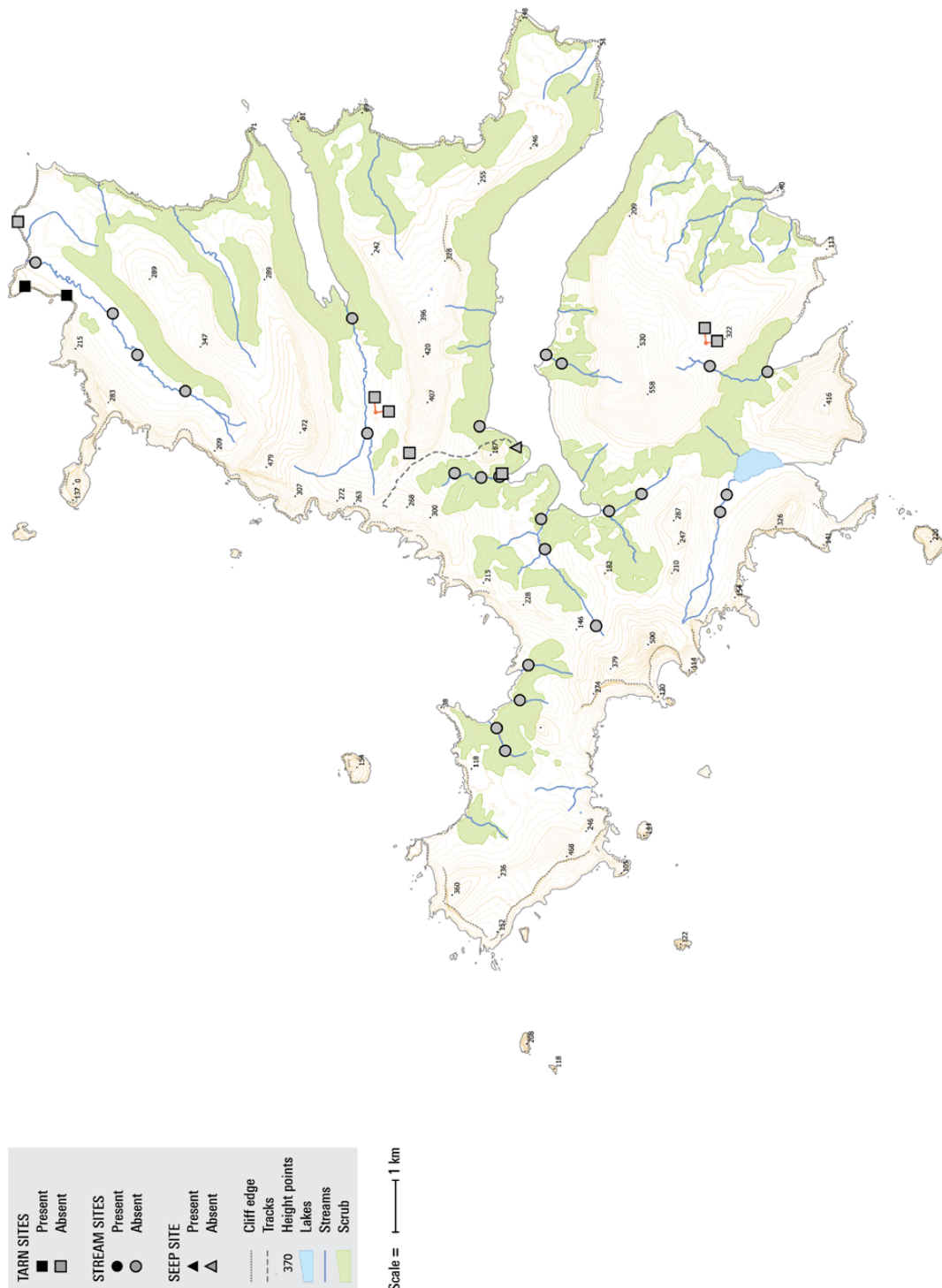


FIGURE 3. *Boeckella* male 5th leg

Biogeographic Information

Presence/absence on streams, tarns, and a seepage sampled on Campbell Island.

Distribution map based on surveys undertaken by EOS Ecology during the 2010–11 Campbell Island Bicentennial Expedition (www.campbellisland.org.nz). Distribution data © EOS Ecology, 2013.



New Zealand Transverse Mercator
 New Zealand Geodetic 2000
 Created on: 3 December 2013
 Created by: Kirsty Brennan

Boeckella sp. Distribution
CAMPBELL ISLAND
 December 2010–February 2011

Produced by: EOS Ecology
 Project name: Campbell Island Bicentennial Expedition
 Project no.: 06033-EOS01
 Project lead: Shelley McMurtrie
www.eosecology.co.nz



Original Description

N/A

References & Further Reading

- Chapman, M.A., Lewis, M.H. & Winterbourn, M.J. 2011. *Guide to the freshwater Crustacea of New Zealand*. New Zealand Freshwater Sciences Society, Christchurch. 188pp.
- Jolly, V. H. 1957. A review of the copepod genus *Boeckella* in New Zealand. *Transactions of the Royal Society of New Zealand* 84: 855–865.
- Pugh, P. J. A., Dartnall, H. J. G. & McInnes, S. J. 2002. The non-marine Crustacea of Antarctica and the islands of the Southern Ocean: biodiversity and biogeography. *Journal of Natural History* 36: 1047–1103.

How to Cite this Information Sheet

- McMurtrie, S.A., Sinton, A.M.R., & Winterbourn, M.J. 2014. Lucid Identification Key to Campbell Island Freshwater Invertebrates: *Boeckella* sp. information sheet. EOS Ecology, Christchurch, New Zealand.

ACKNOWLEDGEMENTS – The creation of the Lucid Key and information sheets were supported by the TFBIS (Terrestrial and Freshwater Biodiversity Information System) Fund administered by the Department of Conservation (TFBIS Contract No. 278), and by EOS Ecology. Invertebrate specimens were collected by EOS Ecology during the 2010–11 Campbell Island Bicentennial Expedition (CIBE), made possible by the 50° South Trust. Thanks to Maureen Lewis for her assistance and contribution to this information sheet.

