

# Identification Key to Campbell Island Freshwater Invertebrates

McMurtrie, Sinton & Winterbourn (2014)



## Tricladida INFORMATION SHEET

### Classification

Phylum:	Platyhelminthes
Class:	Turbellaria
Order:	Tricladida
Family:	?Dugesiidae
Genus:	unknown
<b>Common name:</b>	flatworm

### Distinguishing Features

- Body yellowish, pale (Fig. 1); length up to 5.7 mm (preserved specimens)
- Mouth mid-ventral (Fig. 2)
- Eyes absent

### Comments

A number flatworms found in the freshwater invertebrate samples collected during the 2010–11 Campbell Island Bicentennial Expedition have so far not been able to be identified confidently beyond order. They may belong to the Dugesiidae family, and potential DNA barcoding for these animals may help to identify these animals further.

### Original Description

N/A

### How to Cite this Information Sheet

McMurtrie, S.A., Sinton, A.M.R., & Winterbourn, M.J. 2014. Lucid Identification Key to Campbell Island Freshwater Invertebrates: Tricladida information sheet. EOS Ecology, Christchurch, New Zealand.



FIGURE 1. Dorsal view

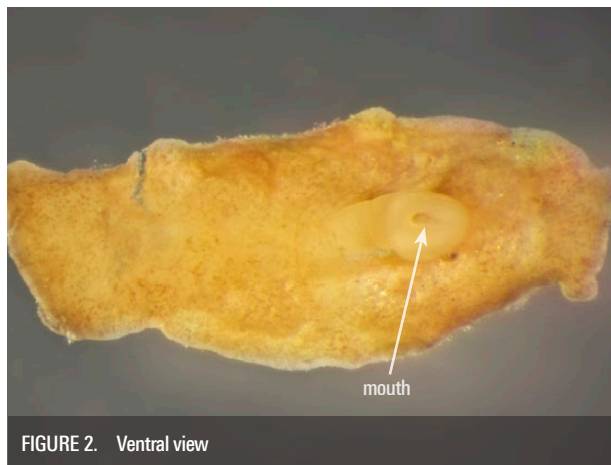


FIGURE 2. Ventral view

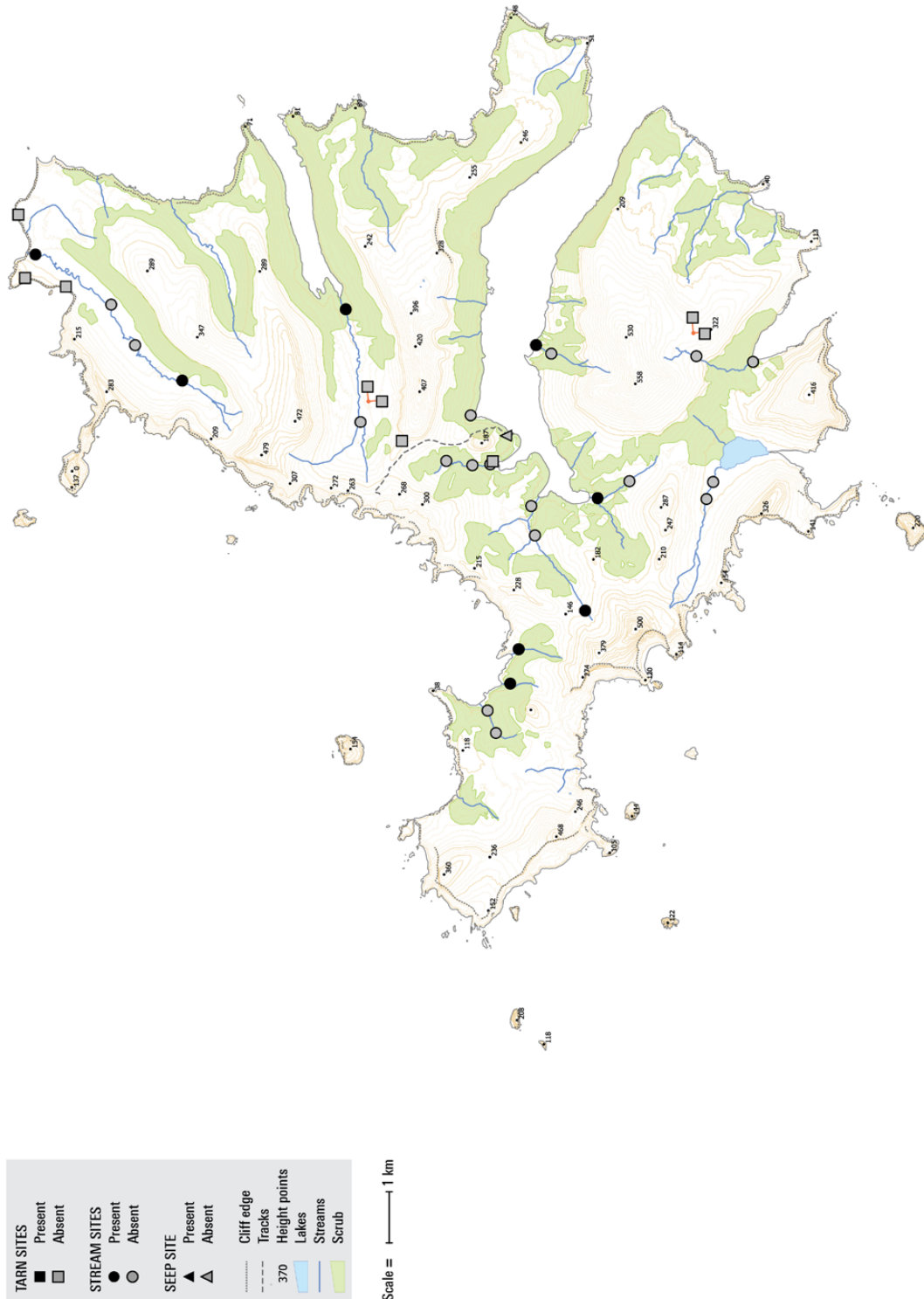
**ACKNOWLEDGEMENTS** – The creation of the Lucid Key and information sheets were supported by the TFBIS (Terrestrial and Freshwater Biodiversity Information System) Fund administered by the Department of Conservation (TFBIS Contract No. 278), and by EOS Ecology. Invertebrate specimens were collected by EOS Ecology during the 2010–11 Campbell Island Bicentennial Expedition (CIBE), made possible by the 50° South Trust.



## Biogeographic Information

Presence/absence on streams, tarns, and a seepage sampled on Campbell Island.

Distribution map based on surveys undertaken by EOS Ecology during the 2010–11 Campbell Island Bicentennial Expedition ([www.campbellisland.org.nz](http://www.campbellisland.org.nz)). Distribution data © EOS Ecology, 2013.



New Zealand Transverse Mercator  
 New Zealand Geodetic 2000  
 Created on: 3 December 2013  
 Created by: Kirsty Brennan

**Tricladida Distribution**  
**CAMPBELL ISLAND**  
 December 2010–February 2011

Produced by:  
 EOS Ecology  
 Project name:  
 Campbell Island Bicentennial Expedition  
 Project no.:  
 06033-EOS01  
 Project lead:  
 Shelley McMurtrie  
[www.eosecology.co.nz](http://www.eosecology.co.nz)

