

Identification Key to Campbell Island Freshwater Chironomidae Larvae

McMurtrie, Sinton & Winterbourn (2014)



Unidentified Orthocladiinae larva ("*Pseudosmittia*")

INFORMATION SHEET

Classification

Class: Insecta
Order: Diptera
Family: Chironomidae
Subfamily: Orthocladiinae
Genus: unknown
Specific name: unidentified larva
"*Pseudosmittia*"

Common name: midge

Distinguishing Features

- Body greenish-grey with gut clearly visible through the body wall (Fig. 1); head mid brown (Fig. 2); eyes dark and roughly circular; body length up to 4 mm.
- Prolegs absent, although hooks are present on the ventral prothorax and posterior abdominal segment; posterior hooks larger and more abundant.
- Mentum with paired median teeth and four lateral teeth on each side; distal half of mentum (and mandibles) darker (Fig. 3).
- Premandibles not bifid.
- Antennae very short, 4-segmented, the first segment largest and almost as long as wide (Fig. 4); blade very long and prominent, 3–4 times as long as antennal segments 2–4 combined; a second shorter blade as long as antennal segment 2 also present.

Comments

The identity and affinities of this larva are unknown. A comparable short antenna with a prominent long blade was figured by Cranston (1982) for an unidentified *Pseudosmittia* species from Britain. He also noted that parapods (prolegs) are absent in *P. simplex*.



FIGURE 1. Whole animal



FIGURE 2. Anterior

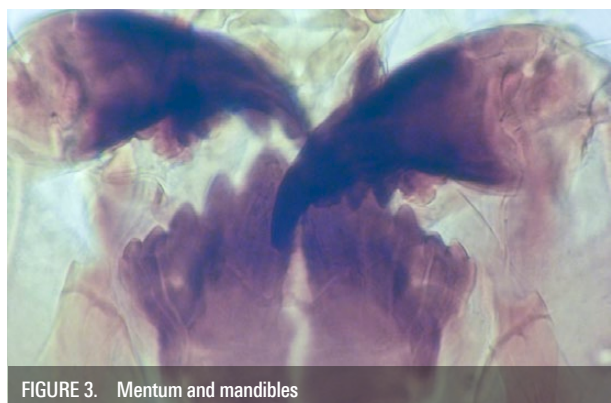


FIGURE 3. Mentum and mandibles

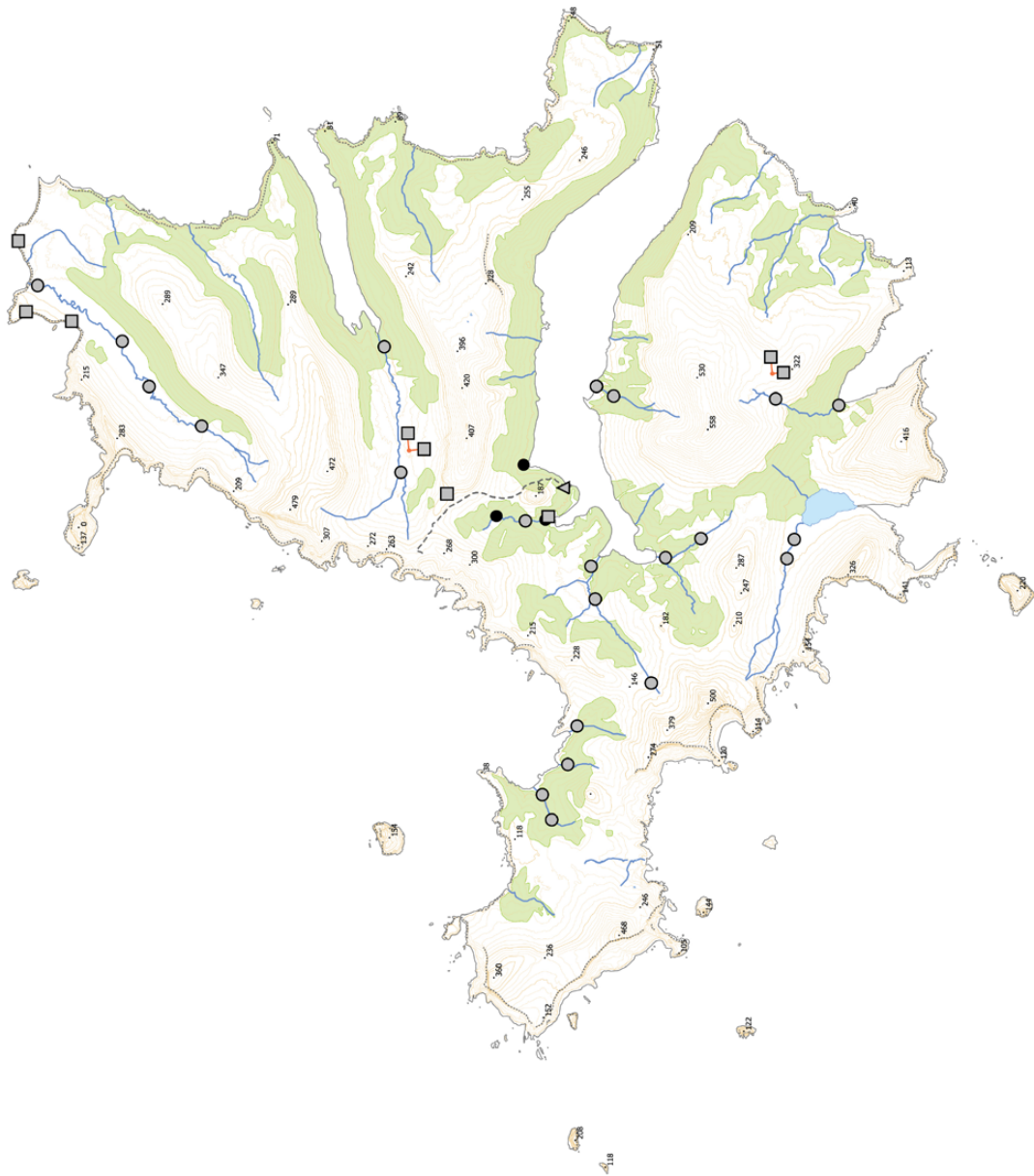


FIGURE 3. Antenna

Biogeographic Information

Presence/absence on streams, tarns, and a seepage sampled on Campbell Island.

Distribution map based on surveys undertaken by EOS Ecology during the 2010–11 Campbell Island Bicentennial Expedition (www.campbellisland.org.nz). Distribution data © EOS Ecology, 2013.



TARN SITES	Present
■	Absent
STREAM SITES	Present
●	Absent
SEEP SITE	Present
▲	Absent
-----	Cliff edge
- - - - -	Tracks
370	Height points
○	Lakes
—	Streams
■	Scrub

Scale = 1 km

New Zealand Transverse Mercator
New Zealand Geodetic 2000
Created on: 3 December 2013
Created by: Kirsty Brennan

Unidentified Orthoclaadiinae Larvae "*Pseudosmittia*" Distribution
CAMPBELL ISLAND
December 2010–February 2011

Produced by: EOS Ecology
Project name: Campbell Island Bicentennial Expedition
Project no.: 06033-EOS01
Project lead: Shelley McMurtrie
www.eosecology.co.nz



Original Description

N/A

References & Further Reading

Cranston, P.S. 1982. *A key to the larvae of the British Orthoclaadiinae (Chironomidae)*. Freshwater Biological Association Scientific Publication No. 45. 152pp.

How to Cite this Information Sheet

McMurtrie, S.A., Sinton, A.M.R., & Winterbourn, M.J. 2014. Lucid Identification Key to Campbell Island Freshwater Chironomidae Larvae: Unidentified Orthoclaadiinae larva ("*Pseudosmittia*") information sheet. EOS Ecology, Christchurch, New Zealand.

ACKNOWLEDGEMENTS – The creation of the Lucid Key and information sheets were supported by the TFBIS (Terrestrial and Freshwater Biodiversity Information System) Fund administered by the Department of Conservation (TFBIS Contract No. 278), and by EOS Ecology. Invertebrate specimens were collected by EOS Ecology during the 2010–11 Campbell Island Bicentennial Expedition (CIBE), made possible by the 50th South Trust.

