

Identification Key to Campbell Island Freshwater Invertebrates

McMurtrie, Sinton & Winterbourn (2014)



Prorhynchus sp. INFORMATION SHEET

Classification

Phylum:	Platyhelminthes
Class:	Turbellaria
Order:	Lecithoepitheliata
Family:	Prorhynchidae
Genus:	<i>Prorhynchus</i>
Common name:	flatworm

Distinguishing Features

- Pale, golden flatworm lacking eyes (Figs. 1, 2); body length up to about 6 mm (preserved specimens).
- Mouth anterior, prominent with a small, straight, pointed stylet in the mouth cavity anterior to the pharynx (Fig. 3).
- Pharynx tubular, muscular, visible on dissection.

Comments

This species may be a previously undescribed one, though it is very similar in some aspects (particularly the mouth, auricles, and pharynx) to the mainland species *Prorhynchus putealis* (Percival, 1945).

Original Description

N/A

References & Further Reading

Percival, E. 1945. The genus *Prorhynchus* in New Zealand (Phylum Platyhelminthes, Class Turbellaria). *Transactions of the Royal Society of New Zealand* 75: 33–41.

Timoshkin, O.A. 1991. Turbellaria, Lecithoepitheliata: morphology, systematic, phylogeny. *Hydrobiologia* 227: 323–332.

How to Cite this Information Sheet

McMurtrie, S.A., Sinton, A.M.R., & Winterbourn, M.J. 2014. Lucid Identification Key to Campbell Island Freshwater Invertebrates: *Prorhynchus* sp. information sheet. EOS Ecology, Christchurch, New Zealand.



FIGURE 1. *Prorhynchus* whole animal



FIGURE 2. *Prorhynchus* head, dorsal view

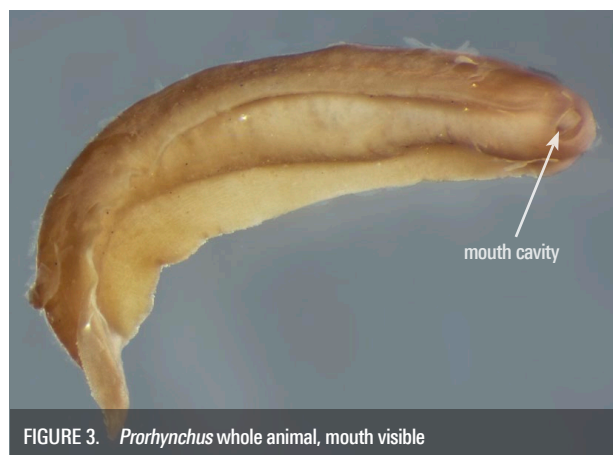


FIGURE 3. *Prorhynchus* whole animal, mouth visible

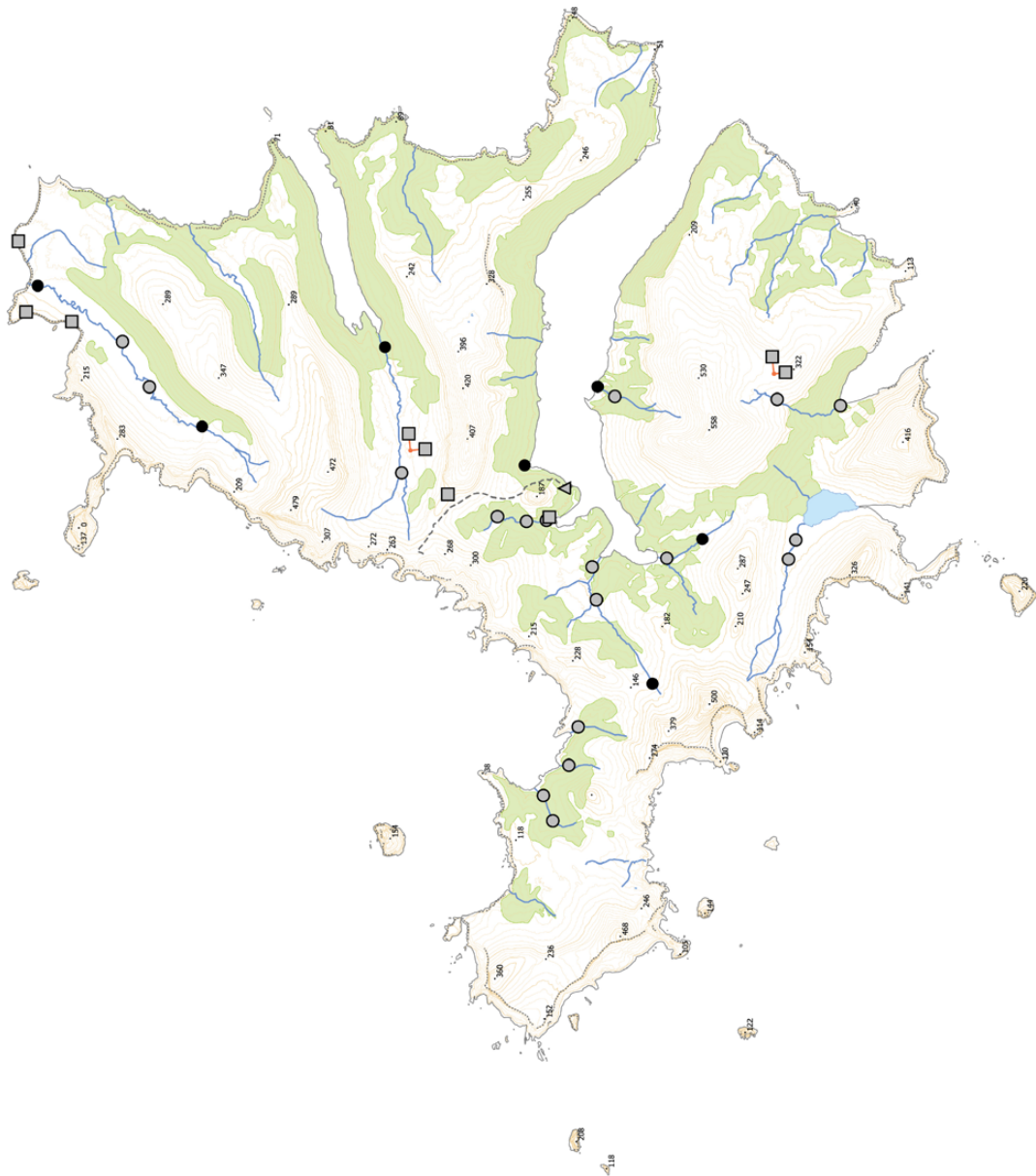
ACKNOWLEDGEMENTS – The creation of the Lucid Key and information sheets were supported by the TFBIS (Terrestrial and Freshwater Biodiversity Information System) Fund administered by the Department of Conservation (TFBIS Contract No. 278), and by EOS Ecology. Invertebrate specimens were collected by EOS Ecology during the 2010–11 Campbell Island Bicentennial Expedition (CIBE), made possible by the 50° South Trust. Thanks to Christopher Laumer for his assistance and contribution to this information sheet.



Biogeographic Information

Presence/absence on streams, tarns, and a seepage sampled on Campbell Island.

Distribution map based on surveys undertaken by EOS Ecology during the 2010–11 Campbell Island Bicentennial Expedition (www.campbellisland.org.nz). Distribution data © EOS Ecology, 2013.



TARN SITES	Present	Black square symbol
	Absent	White square symbol
STREAM SITES	Present	Black circle symbol
	Absent	White circle symbol
SEEP SITE	Present	Black triangle symbol
	Absent	White triangle symbol
	Cliff edge	Dashed line symbol
	Tracks	Dotted line symbol
	Height points	370
	Lakes	Blue area symbol
	Streams	Blue line symbol
	Scrub	Green area symbol

Scale = 1 km

New Zealand Transverse Mercator
New Zealand Geodetic 2000
Created on: 3 December 2013
Created by: Kirsty Brennan

Prorhynchus Distribution
CAMPBELL ISLAND
December 2010–February 2011

Produced by: EOS Ecology
Project name: Campbell Island Bicentennial Expedition
Project no.: 06033-EOS01
Project lead: Shelley McMurtrie
www.eosecology.co.nz

