

Oxyethira albiceps (McLachlan, 1862) INFORMATION SHEET

Classification

Phylum:	Arthropoda
Class:	Insecta
Order:	Trichoptera
Family:	Hydroptilidae
Genus:	<i>Oxyethira</i>
Specific name:	<i>albiceps</i>
Common name:	micro-caddisfly
Original combination:	<i>Hydroptila albiceps</i> McLachlan, 1862

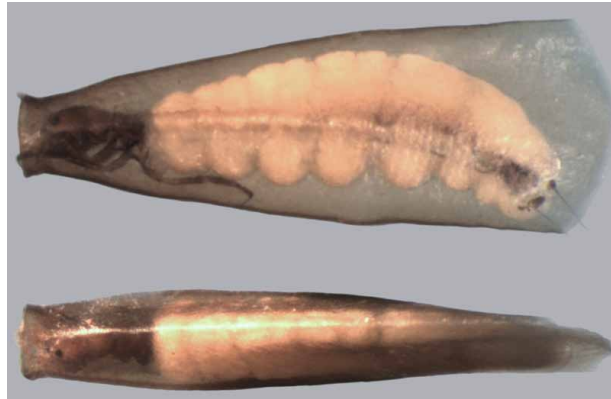


FIGURE 1. *Oxyethira albiceps* whole animal, showing lateral and dorsal view

Distinguishing Features

As in all Trichoptera larvae, *Oxyethira albiceps* have a sclerotised head. All three thoracic segments have sclerotised plates on the and the abdomen is soft. They have three pairs of segmented legs. The abdomen lacks prolegs but has a pair of posterior claws with subsidiary hooks.

Late-instar *Oxyethira albiceps* larvae occupy a transparent, roughly axe-head shaped, portable case (Fig. 1). First instar larvae have no case, however, they can be recognised by very long hairs (setae) projecting posteriorly, and on their legs (Fig. 2).



FIGURE 2. *Oxyethira albiceps* whole animal

Comments

Oxyethira albiceps is widely distributed on the three main islands of New Zealand (North, South, Stewart), and Snares, Antipodes, Auckland, Campbell, and Chatham islands.

Original Description

Hydroptila albiceps McLachlan (1862): Larvae not described

First description of larval biology by Hudson (1904). A detailed morphological description is provided by Cowley (1978).

References & Further Reading

- Cowley, D.R. 1978. Studies on the larvae of New Zealand Trichoptera. *New Zealand Journal of Zoology* 5: 639–750.
- Hudson, G.V. 1904. New Zealand Neuroptera: a popular introduction to the life histories and habits of mayflies, dragonflies and allied

insects inhabiting New Zealand, including notes on their relation to angling. London, West Newman & Co. 102 p.

Leader, J. P. 1970. Hairs of the Hydroptilidae (Trichoptera). *Tane* 16: 121–130.

McLachlan, R. 1862. Characters of New Species of Exotic Trichoptera; also of One New Species inhabiting Britain. *Transactions of the Royal Entomological Society of London* 11 (3): 301–311.

How to Cite this Information Sheet

McMurtrie, S.A., Sinton, A.M.R., & Winterbourn, M.J. 2014. Lucid Identification Key to Campbell Island Freshwater Invertebrates: *Oxyethira albiceps* information sheet. EOS Ecology, Christchurch, New Zealand.

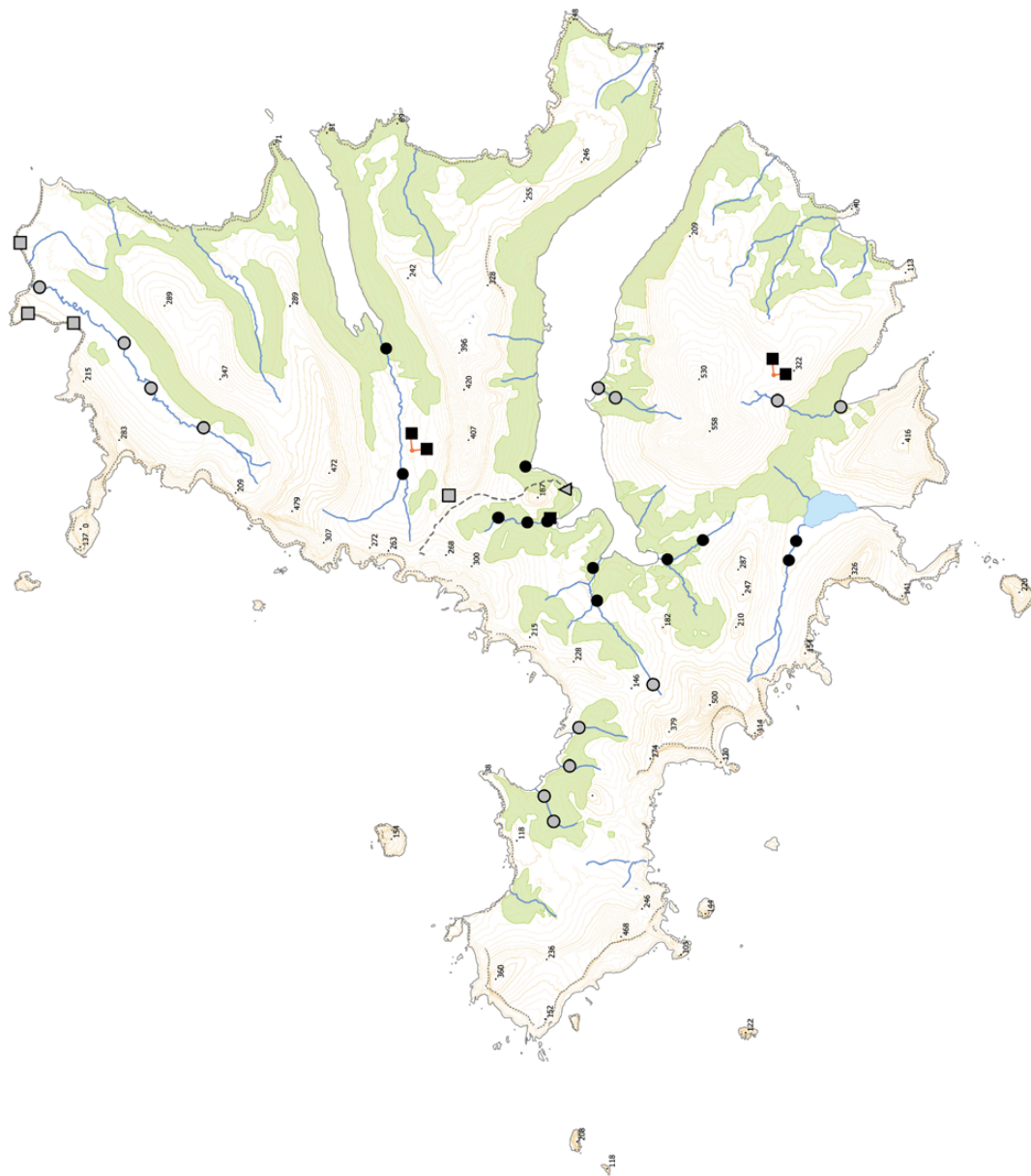
ACKNOWLEDGEMENTS – The creation of the Lucid Key and information sheets were supported by the TFBIS (Terrestrial and Freshwater Biodiversity Information System) Fund administered by the Department of Conservation (TFBIS Contract No. 278), and by EOS Ecology. Invertebrate specimens were collected by EOS Ecology during the 2010–11 Campbell Island Bicentennial Expedition (CIBE), made possible by the 50° South Trust.



Biogeographic Information

Presence/absence on streams, tarns, and a seepage sampled on Campbell Island.

Distribution map based on surveys undertaken by EOS Ecology during the 2010–11 Campbell Island Bicentennial Expedition (www.campbellisland.org.nz). Distribution data © EOS Ecology, 2013.



TARN SITES	Present	Black square
	Absent	White square
STREAM SITES	Present	Black circle
	Absent	White circle
SEEP SITE	Present	Black triangle
	Absent	White triangle
	Cliff edge	Dashed line
	Tracks	Dotted line
	Height points	370
	Lakes	Blue area
	Streams	Blue line
	Scrub	Green area

Scale = 1 km

New Zealand Transverse Mercator
New Zealand Geodetic 2000
Created on: 3 December 2013
Created by: Kirsty Brennan

***Oxyethira albiceps* Distribution**
CAMPBELL ISLAND
December 2010–February 2011

Produced by:
EOS Ecology
Campbell Island Bicentennial Expedition
Project name:
06033-EOS01
Project no.:
Shelley McMurtrie
Project lead:
www.eosecology.co.nz

