

Identification Key to Campbell Island Freshwater Invertebrates

McMurtrie, Sinton & Winterbourn (2014)



Neppia sp. INFORMATION SHEET

Classification

| | |
|---------------------|-----------------------|
| Phylum: | Platyhelminthes |
| Class: | Turbellaria |
| Order: | Tricladida |
| Family: | Dugesiidae |
| Genus: | ? <i>Neppia</i> |
| Specific name: | unknown species |
| Common name: | flatworm, "planarian" |

Distinguishing Features

- Body colour ranging from pale yellowish to grey-brown (Fig. 1); body length up to 6.5 mm (preserved material).
- Pharynx mid-ventral, sometimes protruded in preserved material. If not protruded the ventral mouth can be difficult to see.
- Two small eyes present anteriorly (Fig. 1); more or less triangular auricles (Fig. 2).

Comments

The genus *Neppia* was originally considered to be a subgenus of *Dugesia* (De Vries & Sluys, 1991). *Neppia montana* occurs in New Zealand and other species are known from the Subantarctic region (Nurse, 1950).

Original Description

N/A

References & Further Reading

De Vries, E.J. & Sluys, R. 1991. Phylogenetic relationships of the genus *Dugesia* (Platyhelminthes, Tricladida, Paludicola). *Journal of Zoology* 223: 103–116.

Nurse, F.R. 1950. Freshwater tricladids new to the fauna of New Zealand. *Transactions of the Royal Society of New Zealand* 78: 410-417.



FIGURE 1. ?*Neppia* whole animal

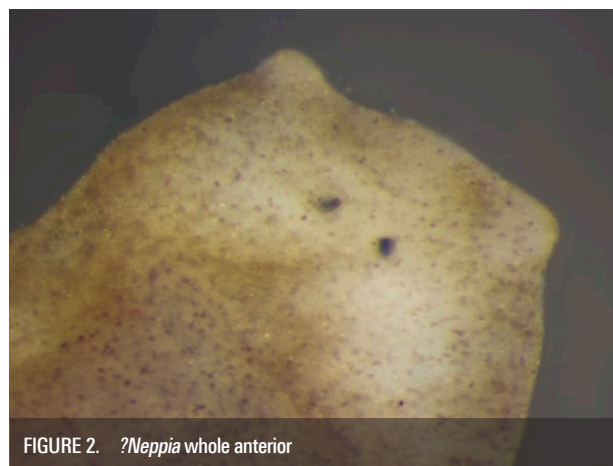


FIGURE 2. ?*Neppia* whole anterior

How to Cite this Information Sheet

McMurtrie, S.A., Sinton, A.M.R., & Winterbourn, M.J. 2014. Lucid Identification Key to Campbell Island Freshwater Invertebrates: *Neppia* sp. information sheet. EOS Ecology, Christchurch, New Zealand.

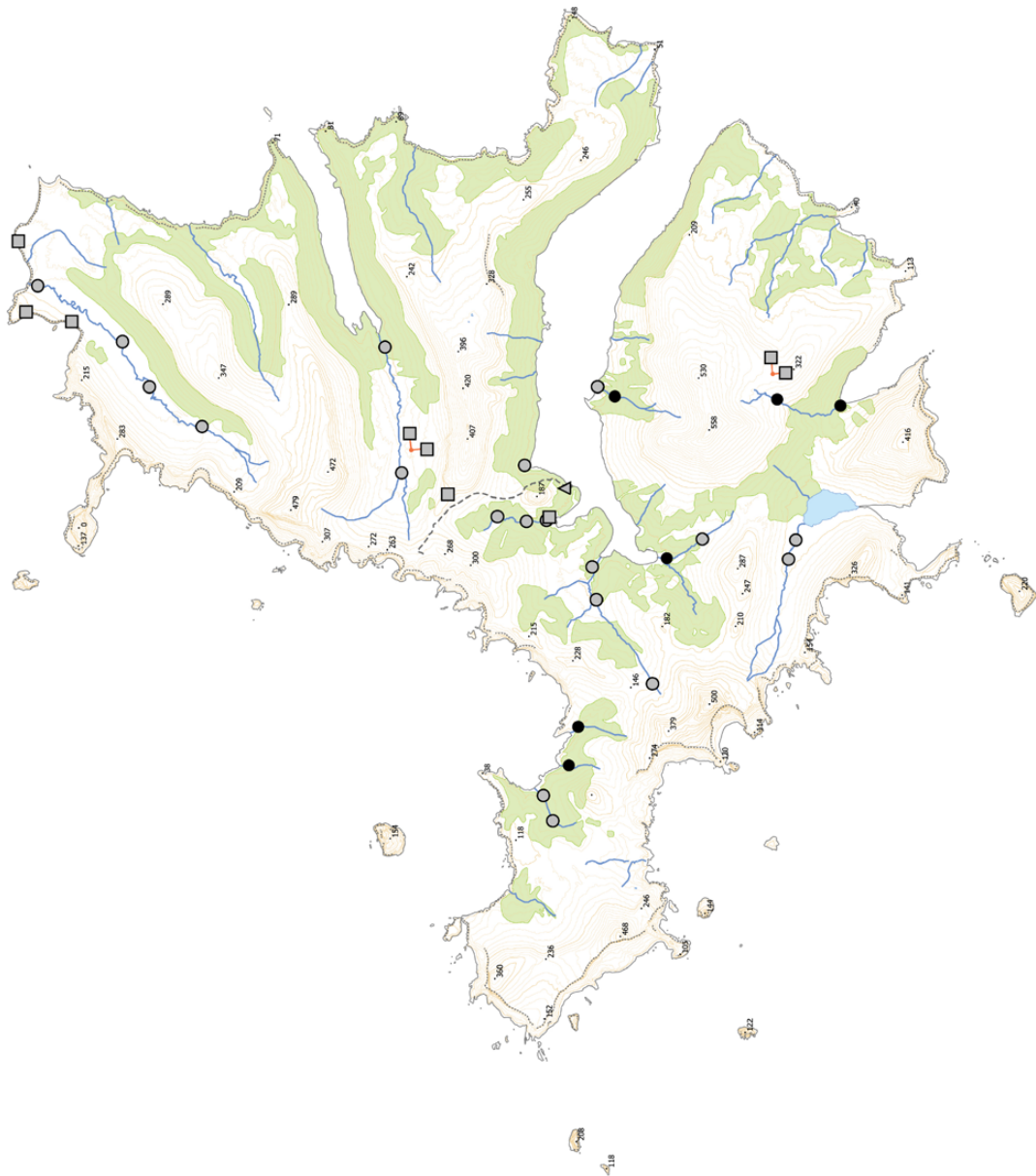
ACKNOWLEDGEMENTS – The creation of the Lucid Key and information sheets were supported by the TFBIS (Terrestrial and Freshwater Biodiversity Information System) Fund administered by the Department of Conservation (TFBIS Contract No. 278), and by EOS Ecology. Invertebrate specimens were collected by EOS Ecology during the 2010–11 Campbell Island Bicentennial Expedition (CIBE), made possible by the 50° South Trust. Thanks to Miquel Vila Farré for his assistance and contribution to this information sheet.



Biogeographic Information

Presence/absence on streams, tarns, and a seepage sampled on Campbell Island.

Distribution map based on surveys undertaken by EOS Ecology during the 2010–11 Campbell Island Bicentennial Expedition (www.campbellisland.org.nz). Distribution data © EOS Ecology, 2013.



| | | |
|---------------------|---------------|-------|
| TARN SITES | Present | ■ |
| | Absent | □ |
| STREAM SITES | Present | ● |
| | Absent | ○ |
| SEEP SITE | Present | ▲ |
| | Absent | △ |
| | Cliff edge | ----- |
| | Tracks | --- |
| | Height points | 370 |
| | Lakes | ■ |
| | Streams | — |
| | Scrub | ■ |

Scale = 1 km

New Zealand Transverse Mercator
New Zealand Geodetic 2000
Created on: 3 December 2013
Created by: Kirsty Brennan

Neppia Distribution
CAMPBELL ISLAND
December 2010–February 2011

Produced by:
EOS Ecology
Campbell Island Bicentennial Expedition
Project name:
06033-EOS01
Project no.:
Shelley McMurtrie
Project lead:
www.eosecology.co.nz

