

Identification Key to Campbell Island Freshwater Invertebrates

McMurtrie, Sinton & Winterbourn (2014)



Nematoda INFORMATION SHEET

Classification

Phylum: Nematoda
Common name: round worms

Distinguishing Features

- Generally less than 3 mm long, slender, smooth and unsegmented (Fig. 1).
- Usually white or semi-transparent.
- Body round in cross section and often with at least one sharply pointed end (Fig. 2–3).
- Tubular digestive system with openings at both ends.

Comments

Clark (1963) provided descriptions and habitat notes on species of Mononchidae collected from Campbell Island from terrestrial habitats including moss, soil, leaf litter, and beneath vegetation. Two nematode species have been recorded from freshwater streams on Macquarie Island (Greenslade, 2006); an unidentified species of Cyatholaimidae and *Enoploides stewarti* Nicholas (Thoracostomopsidae).

Original Description

N/A

References & Further Reading

Clark, W.C. 1963. Notes on the Mononchidae (Nematoda) of the New Zealand region with descriptions of new species. *New Zealand Journal of Science* 6: 612–632.

Greenslade, P. 2006. *The invertebrates of Macquarie Island*. Australian Antarctic Division, Tasmania, Australia.

How to Cite this Information Sheet

McMurtrie, S.A., Sinton, A.M.R., & Winterbourn, M.J. 2014. Lucid Identification Key to Campbell Island Freshwater Invertebrates: Nematoda information sheet. EOS Ecology, Christchurch, New Zealand.



FIGURE 1. Nematoda whole animals

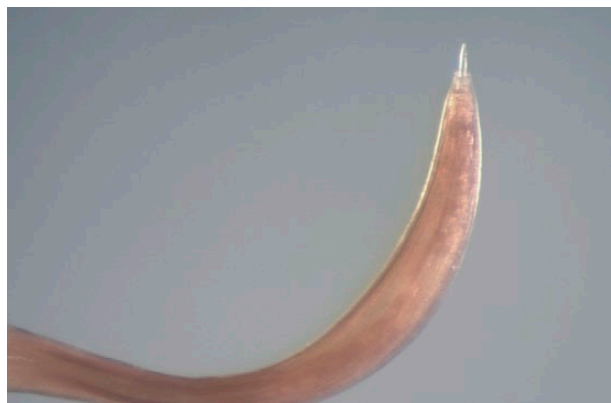


FIGURE 2. Nematoda anterior



FIGURE 3. Nematoda posterior

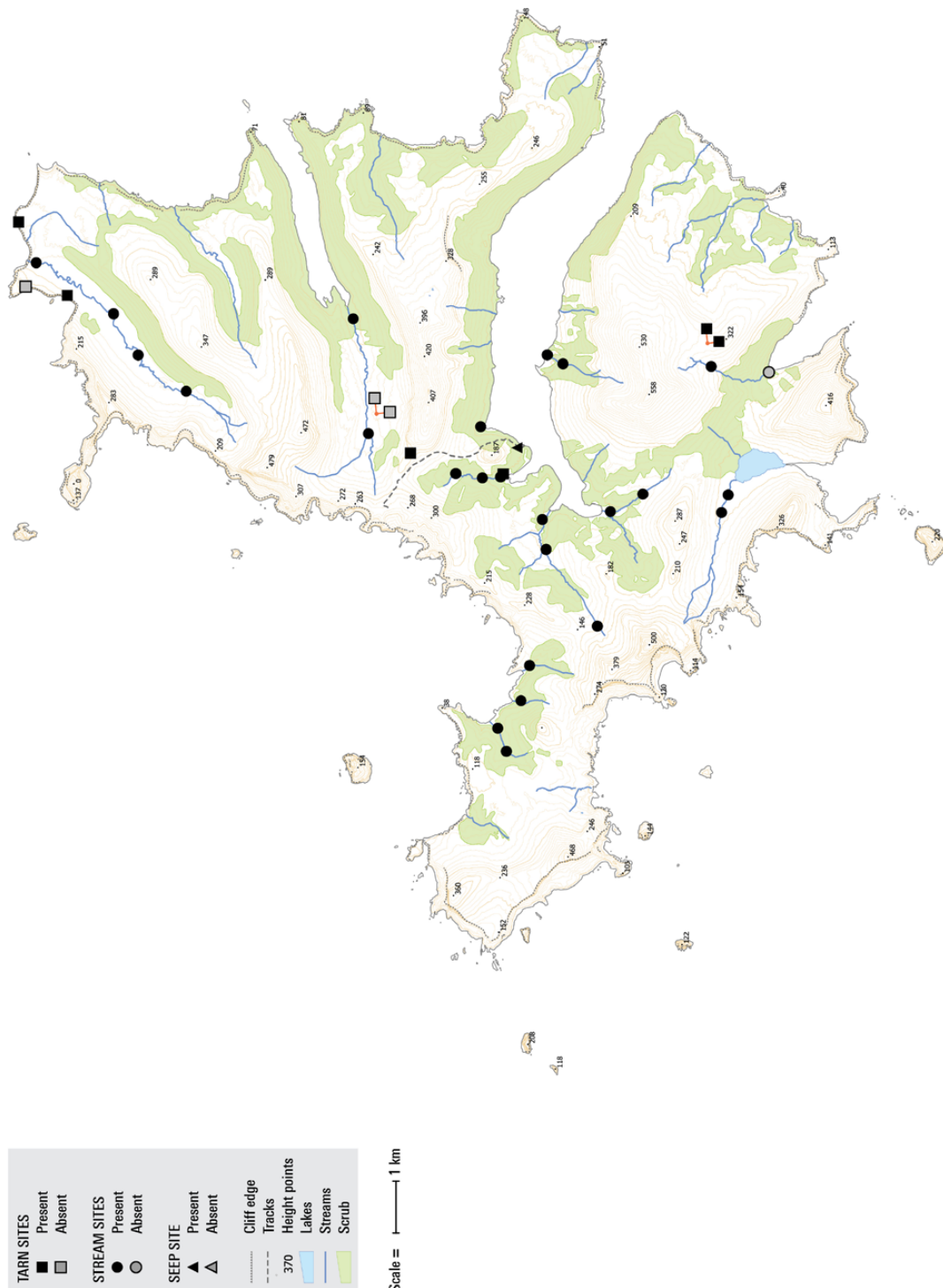
ACKNOWLEDGEMENTS – The creation of the Lucid Key and information sheets were supported by the TFBIS (Terrestrial and Freshwater Biodiversity Information System) Fund administered by the Department of Conservation (TFBIS Contract No. 278), and by EOS Ecology. Invertebrate specimens were collected by EOS Ecology during the 2010–11 Campbell Island Bicentennial Expedition (CIBE), made possible by the 50th South Trust. Thanks to Zeng Zhao and Gregor Yeates for their assistance and contribution to this information sheet.



Biogeographic Information

Presence/absence on streams, tarns, and a seepage sampled on Campbell Island.

Distribution map based on surveys undertaken by EOS Ecology during the 2010–11 Campbell Island Bicentennial Expedition (www.campbellisland.org.nz). Distribution data © EOS Ecology, 2013.



TARN SITES
 Present: ■
 Absent: □

STREAM SITES
 Present: ●
 Absent: ○

SEEP SITE
 Present: ▲
 Absent: △

Cliff edge
 Tracks
 Height points
 370
 Lakes
 Streams
 Scrub

Scale = 1 km

New Zealand Transverse Mercator
 New Zealand Geodetic 2000
 Created on: 3 December 2013
 Created by: Kirsty Brennan

Nematoda Distribution
CAMPBELL ISLAND
 December 2010–February 2011


 Produced by: EOS Ecology
 Project name: Campbell Island Bicentennial Expedition
 Project no.: 06033-EOS01
 Project lead: Shelley McMurtrie
www.eosecology.co.nz