

# Identification Key to Campbell Island Freshwater Invertebrates

McMurtrie, Sinton & Winterbourn (2014)



## Muscidae INFORMATION SHEET

### Classification

Class: Insecta  
Order: Diptera  
Family: Muscidae  
Genus: unknown  
Common name: house fly

### Distinguishing Features

- Body yellowish with striations on segments, laterally (Fig. 1); length up to 15 mm.
- Posterior siphons short, not joined at the base; tracheal trunks clearly visible within them (Fig. 3).
- Seven body segments have creeping welts (Fig. 1), those on the posterior segment being a complex of small welts (Fig. 3).

### Comments

Eight species of Muscidae in three genera (*Paralimnophora* [2 species], *Spilogona* [5 species] and *Coenosia* [1 species]) have been recorded from Campbell Island as adults but no larvae or pupae have been described. Some of the three genera are likely to have aquatic larvae. The larva described above is of the "*Limnophora*" type (Wirth & Stone, 1968; Winterbourn *et al.*, 2006).

There are a number of descriptions of adult Muscidae but these require clarification as in some cases the same species may have been described more than once and some species complexes also probably exist.

### Original Description

*Limnophora*, Harrison (1955): Larvae not described

*Paralimnophora*, Harrison (1955): Larvae not described

*Spilogona*, Malloch (1931): Larvae not described

### References & Further Reading

Harrison, R.A. 1955. Report on Diptera of Auckland and Campbell Islands. The Diptera of Auckland and Campbell islands, part 1. *Records of the Dominion Museum* 2(4): 205–231.

Malloch, J.R. 1931. The Calyptrate Diptera of New Zealand, Part V. *Records of the Canterbury Museum* 3(6): 377–383.



FIGURE 1. Muscidae whole animal



FIGURE 2. Muscidae anterior



FIGURE 3. Muscidae posterior

Winterbourn, M.J., Gregson, K.L.D. & Dolphin, C.H. 2006. Guide to the aquatic insects of New Zealand (4th edition). Bulletin of the Entomological Society of New Zealand 14.

Wirth, W.W. & Stone, A. 1968. Aquatic Diptera. In: Usinger, R. L. (ed.) Aquatic insects of California. University of California Press, Berkeley & Los Angeles: 372–482.

### How to Cite this Information Sheet

McMurtrie, S.A., Sinton, A.M.R., & Winterbourn, M.J. 2014. Lucid Identification Key to Campbell Island Freshwater Invertebrates: Muscidae information sheet. EOS Ecology, Christchurch, New Zealand.

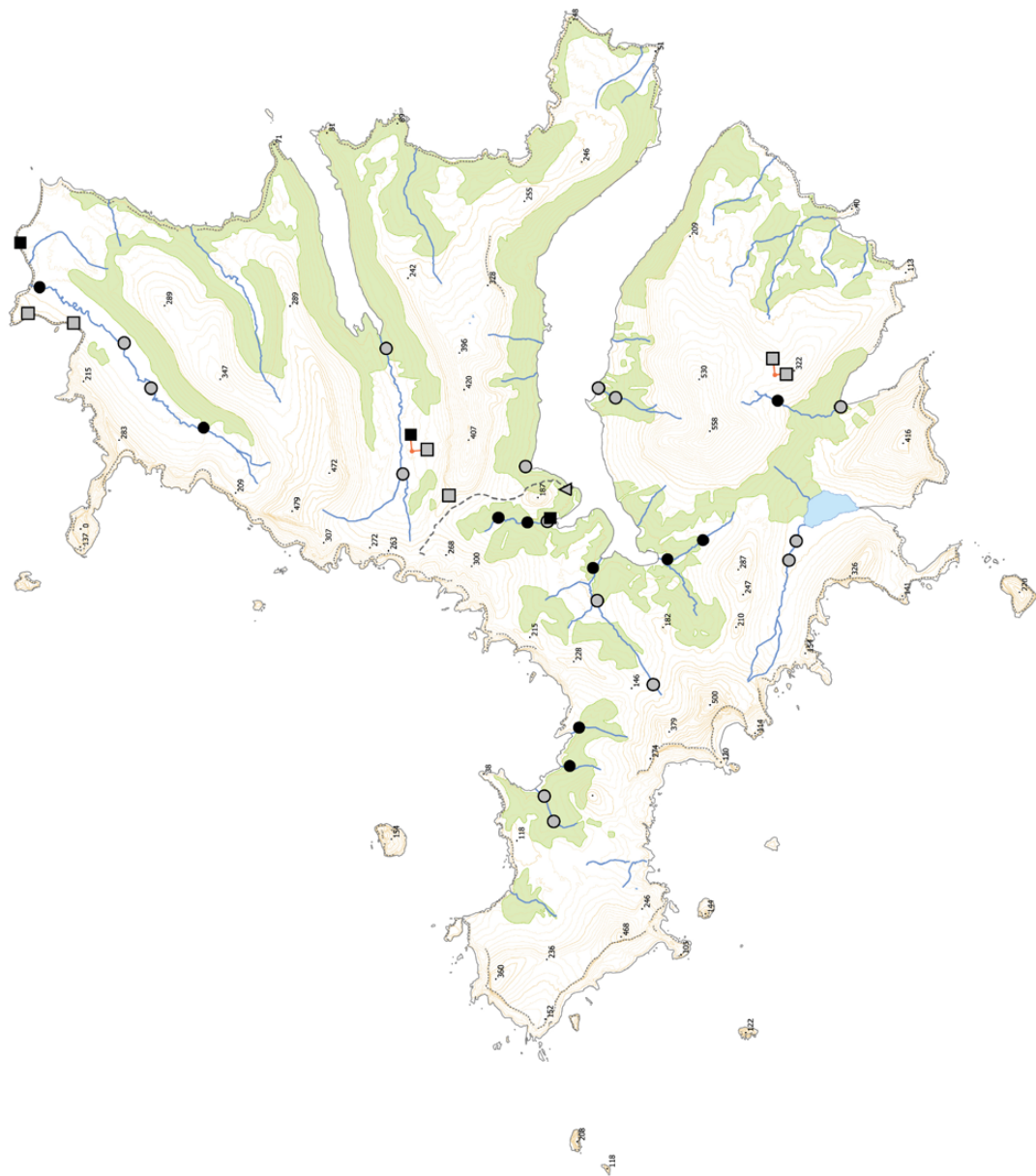
**ACKNOWLEDGEMENTS** – The creation of the Lucid Key and information sheets were supported by the TFBIS (Terrestrial and Freshwater Biodiversity Information System) Fund administered by the Department of Conservation (TFBIS Contract No. 278), and by EOS Ecology. Invertebrate specimens were collected by EOS Ecology during the 2010–11 Campbell Island Bicentennial Expedition (CIBE), made possible by the 50° South Trust. Thanks to Rod Macfarlane for his assistance and contribution to this information sheet.



## Biogeographic Information

Presence/absence on streams, tarns, and a seepage sampled on Campbell Island.

Distribution map based on surveys undertaken by EOS Ecology during the 2010–11 Campbell Island Bicentennial Expedition ([www.campbellisland.org.nz](http://www.campbellisland.org.nz)). Distribution data © EOS Ecology, 2013.



<b>TARN SITES</b>	Present	■
	Absent	□
<b>STREAM SITES</b>	Present	●
	Absent	○
<b>SEEP SITE</b>	Present	▲
	Absent	△
	Cliff edge	-----
	Tracks	---
	Height points	370
	Lakes	■
	Streams	—
	Scrub	■

Scale = 1 km

New Zealand Transverse Mercator  
New Zealand Geodetic 2000  
Created on: 3 December 2013  
Created by: Kirsty Brennan

**Muscidae Distribution**  
**CAMPBELL ISLAND**  
December 2010–February 2011

Produced by:  
EOS Ecology  
Campbell Island Bicentennial Expedition  
Project name:  
06033-EOS01  
Project no.:  
Shelley McMurtrie  
Project lead:  
[www.eosecology.co.nz](http://www.eosecology.co.nz)

