

Identification Key to Campbell Island Freshwater Chironomidae Larvae

McMurtrie, Sinton & Winterbourn (2014)



Ablabesmyia mala (Hutton, 1902) INFORMATION SHEET

Classification

Class: Insecta
Order: Diptera
Family: Chironomidae
Subfamily: Tanypodinae
Genus: *Ablabesmyia*
Specific name: *mala*
Common name: midge
Original combination: *Tanypus malus* Hutton, 1902
Previous combination: *Pentaneura (Ablabesmyia) malus* (Hutton) Freeman, 1959

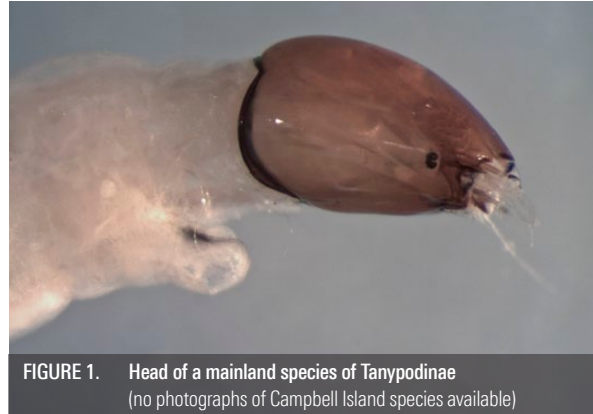


FIGURE 1. Head of a mainland species of Tanypodinae (no photographs of Campbell Island species available)

Distinguishing Features

As a member of the subfamily Tanypodinae, *A. mala* has the following characteristics:

- Body colour yellowish, head relatively long (more or less oval in shape but narrowing anterior to the eyes), yellowish-brown with a dark basal margin; a simple eye on each side of the head (Fig. 1); body length up to 11 mm.
- Antennae half as long as head, retractile into head capsule (Fig. 2).
- Ligula strongly developed with 5 teeth (Fig. 2).
- Prothoracic and posterior prolegs long and narrow, anal gills pointed (Fig. 3).

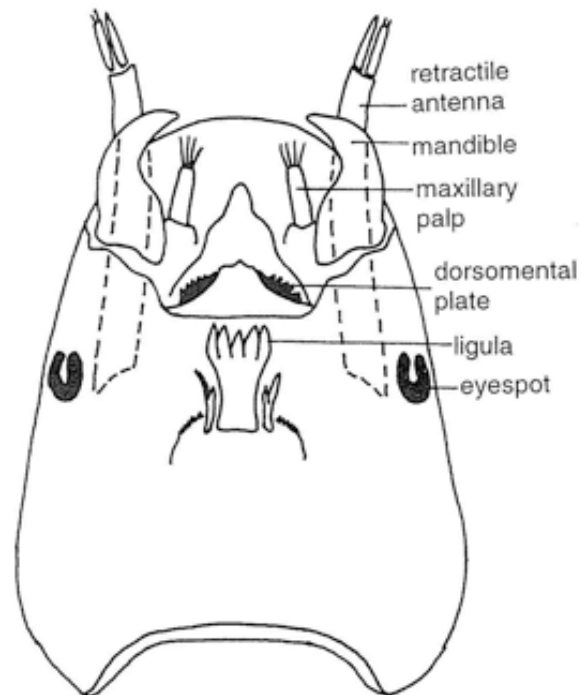


FIGURE 2. Tanypodinae head capsule, ventral view (illustration from Winterbourn *et al.* (2006))

Comments

Ablabesmyia mala was not found during the 2010–11 Campbell Island Bicentennial Expedition, or by Joy & Death (2000), but was reported from Campbell Island by Sublette & Wirth (1980). It is also known from New Zealand.

Original Description

Tanypus malus Hutton (1902): No larval description.

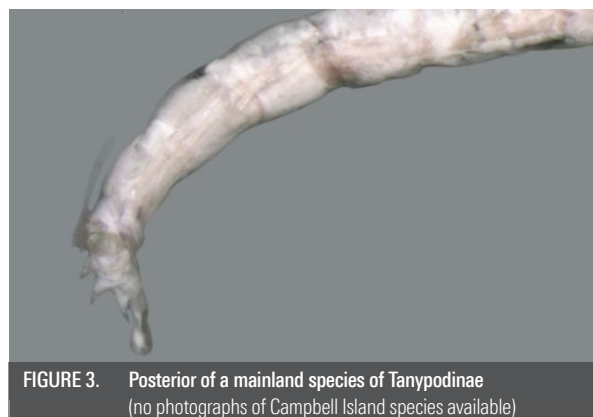


FIGURE 3. Posterior of a mainland species of Tanypodinae (no photographs of Campbell Island species available)

References & Further Reading

- Freeman, P. 1959. A study of the New Zealand Chironomidae (Diptera, Nematocera). *Bulletin of the British Museum (Natural History), Entomology Series* 7 (9): 395–437.
- Hutton, F.W. 1902. On a small collection of Diptera from the southern islands of New Zealand. *Transactions and proceedings of the New Zealand Institute* 34: 169–175.
- Joy, M.K. & Death, R.G. 2000. Stream invertebrate communities of Campbell Island. *Hydrobiologia* 439: 115–124.
- Sublette, J. E. & Wirth, W. W. 1980. The Chironomidae and Ceratopogonidae (Diptera) of New Zealand's subantarctic islands. *New Zealand Journal of Zoology* 7: 299–378.
- Winterbourn, M.J., Gregson, K.L.D. & Dolphin, C.H. 2006. *Guide to the aquatic insects of New Zealand* (4th edition). Bulletin of the Entomological Society of New Zealand 14. 108pp.

How to Cite this Information Sheet

- McMurtrie, S.A., Sinton, A.M.R., & Winterbourn, M.J. 2014. Lucid Identification Key to Campbell Island Freshwater Chironomidae Larvae: *Ablabesmyia mala* information sheet. EOS Ecology, Christchurch, New Zealand.

ACKNOWLEDGEMENTS – The creation of the Lucid Key and information sheets were supported by the TFBIS (Terrestrial and Freshwater Biodiversity Information System) Fund administered by the Department of Conservation (TFBIS Contract No. 278), and by EOS Ecology. Invertebrate specimens were collected by EOS Ecology during the 2010–11 Campbell Island Bicentennial Expedition (CIBE), made possible by the 50° South Trust.

